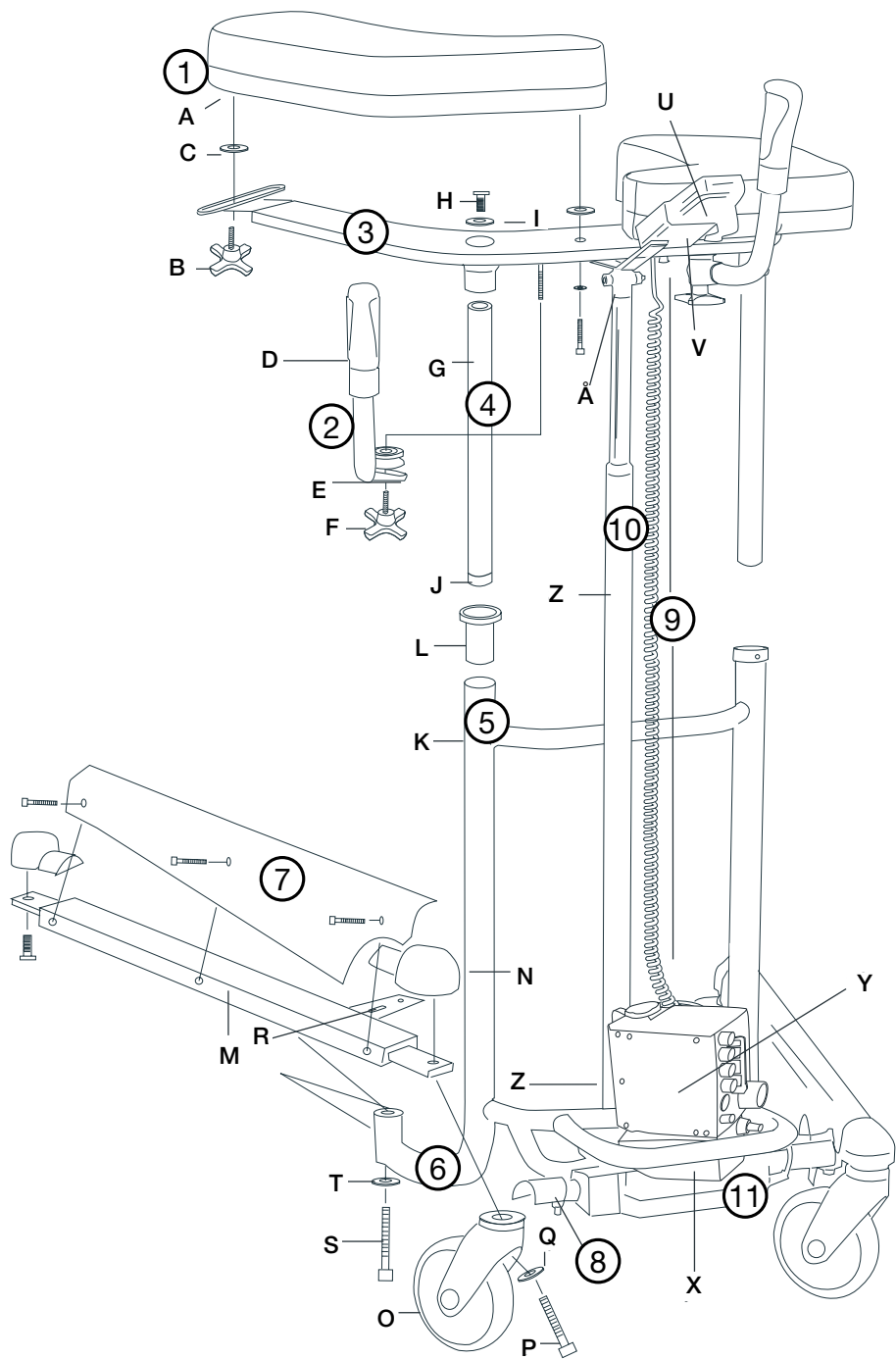




BureTM

Walker

Bure Double EL 56-313



Parts list

<p>1 A Armrest B Knob C Plastic washer</p>	<p>5 K Frame with battery shelf L Guide sleeve</p>	<p>8 Protective plate, small (widening)</p>
<p>2 D Handle and grip E Clamp F Knob</p>	<p>6 M Castor frame N End attachment, cast metal O Wheel P Bolt Q Washer R Widening bracket S Attachment bolt T Washer</p>	<p>9 U Remote control V Holder, remote control X Battery Y Control box</p>
<p>3 Upper frame</p>	<p>7 Protective plate, large (castor frame)</p>	<p>10 Z Actuator (raise/lower) Å Bolts, washer (2 pcs), nut (attachment at bottom and top)</p>
<p>4 G Chromium-plated tube H Attachment bolt (2 pcs) I Washer J End bushing</p>		<p>11 Actuator, widening</p>

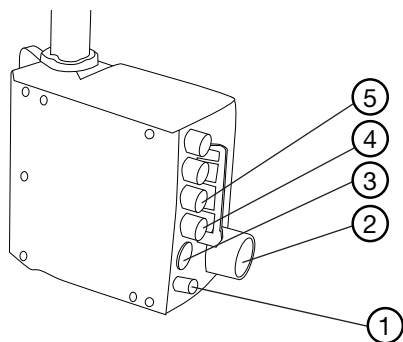
Spare parts

No.	Part no.	Description
-	56-305	Touch-up paint Bure, Silver 8
-	56-306	Touch-up paint Bure, Dark grey RAL 7021
1A	57-047	Armrest right
1A	57-046	Armrest left
V	56-328	Holder, hand controller
L	56-340	Guide sleeve
J	56-343	End piece, guide tube
X	56-346-1	Battery/LA31
X	56-346	Battery/LA28
7	56-347	Protective plate, left
7	56-348	Protective plate, right
Z	56-349-1	Actuator (raise/lower)/LA31
Z	56-349	Actuator (raise/lower)/LA28
11	56-350-1	Actuator (widening)/LA31
11	56-350	Actuator (widening)/LA28
2	56-353	Handle kit, Bure Std (2 pairs incl. lock knob/clamps)
N	57-603	End attachment, cast metal
N	57-308	End attachment, plastic
-	56-387	Wheel with brake 75 mm
-	56-357	Wheel without brake 100 mm
-	56-358	Wheel with brake 100 mm
-	56-360	Wheel without brake 125 mm
O	56-361	Wheel with brake 125 mm
E	56-356	Locking clamp, handle
F	56-363	Knob for adjusting handle
B	56-364	Knob for adj. width of armrest plates
U	56-371-1	Hand control 4channel (raise/lower), widening (in/out)/LA31
U	56-371	Hand control 4channel (raise/lower), widening (in/out)/LA28
-	56-374-1	Power cable/LA31
-	56-374	Charger/LA28
Y	56-345-1	Control box 220V/LA31
Y	56-345-2	Control box 110V/LA31

Accessories

Part no.	Description
56-325	Footplate, Bure Double (plate)
56-325-LOW	Extra low footplate, Bure Double (plate)
56-325-1	Footplate (aluminium), Bure Double
56-354	Handbrake kit (-0 Standard, -1 One-handed brake)
56-329	Frame elevation kit (+70 mm), Bure Double
56-334	Drip holder
56-335	Attachment for drip holder
56-336	Oxygen holder
56-337	Side support, adjustable
56-338	Drip rod complete with attachment
56-389	Soft basket with attachment

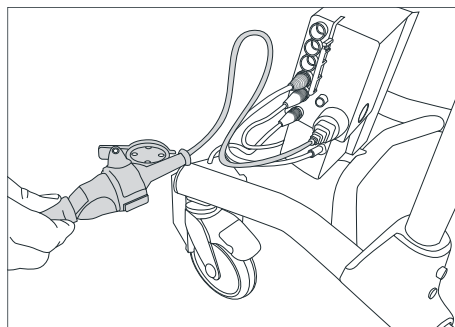
Other instructions



Control box wiring

1. Battery terminal socket.
2. Plug socket
NOTE! Plugs must ALWAYS be connected to the control box for IP classification to be valid.
3. Remote control socket.
4. Socket for the raise/lower actuator.
5. Socket for the frame widening actuator.
(Bure Double only)

NOTE! Make sure that plugs are connected to the correct sockets otherwise the actuators may be damaged.



Battery charging

Battery charging must take place when the walker is not in use (the battery can never be overcharged). Charging is carried out by inserting the plug in a wall socket.



The battery should be charged at least 24 hours before first use.

General maintenance advice

- Wipe the walker and its armrests clean as necessary; use soap solution.
- The product must ALWAYS feel stable. If the walker is lopsided, squeaks or makes suspicious noises alert personnel.
- Replace damaged parts immediately; must be done by experienced personnel.
- Walkers with electric actuators – NEVER use the walker while charging.
- Make sure the guide tube (4G) is securely tightened in the upper frame (3).



Safety instructions

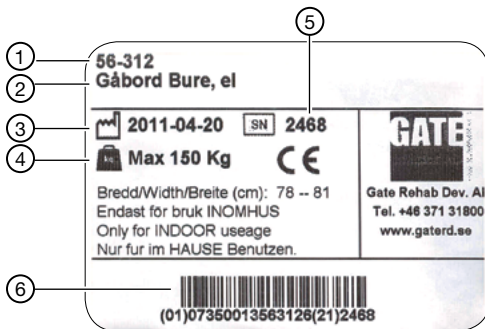


The Bure Walker may only be used:

- as a WALKING AID, indoors
- on HARD, LEVEL surfaces.

When replacing wheels make sure the new wheel bolt is secured using HIGH STRENGTH locking fluid. If bolt (S) is removed it must be secured using HIGH STRENGTH locking fluid on replacement. **MAX USER WEIGHT: 130 KG.**

ID label



1. Part number
2. Product name
3. Date of manufacture
4. Max user weight
5. Serial number
6. EAN code

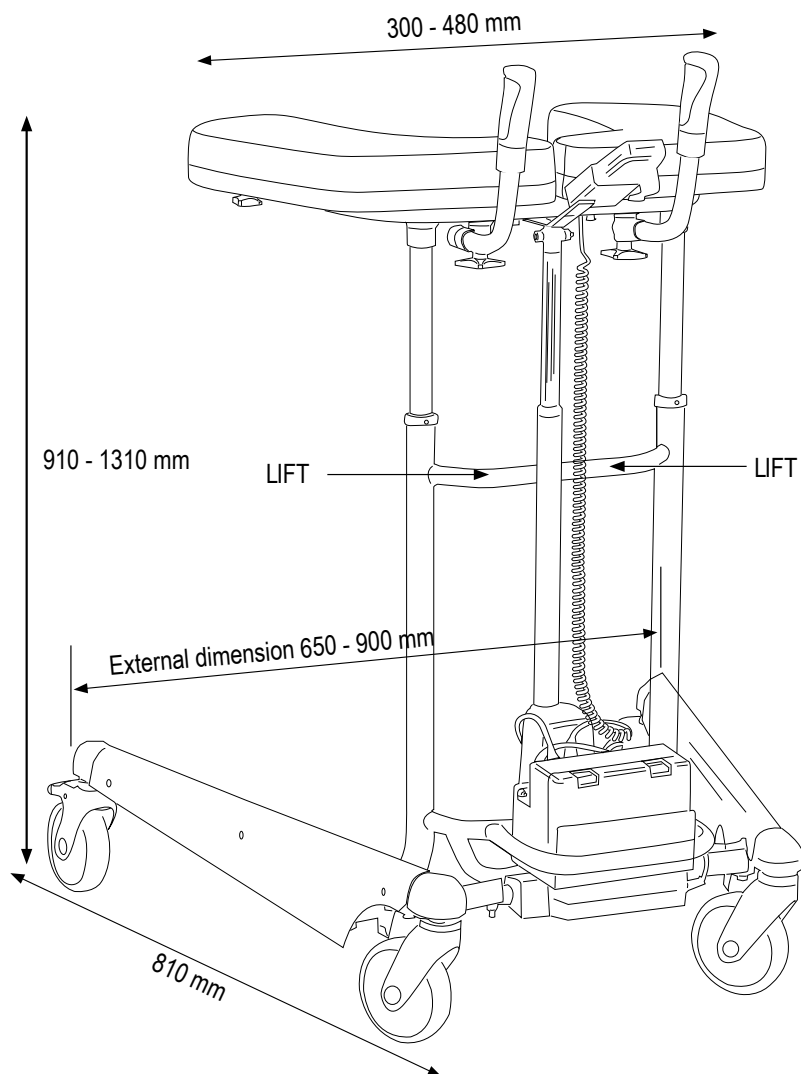
Warranty

We provide two years warranty against manufacturing faults (does not apply to wear parts). For further information or enquiries please contact:



Gate Rehab Development AB
Industrigatan 2, SE-330 21 Reftetele, Sweden
Tel: +46 (0)371 31800
info@gaterd.se

Technical specifications



Product weight: 27 kg
Max user weight: 130 kg

“LIFT” denotes suitable handhold for lifting the walker
NOTE! At least two people are required for lifting.

CE CE marked according to MDD 93/42/EEC.



YOUR HEALTHCARE PARTNER

Would you like to know more?

Contact us at: Tel: +46 371 31800
Gate Rehab Development AB
Industrigatan 2 | SE-330 21 Reftele
info@gaterd.se | www.gaterd.se



GATE COLLECTION